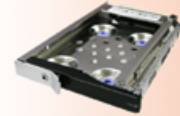


### INTRODUCTION

This Snap-in bay with shock mount OEM kit is an ideal solution for equipment that needs a custom fit of a 2.5" removable drive system. This kit share the same Addonics 2.5" Snap-In SP mechanism. The shock mount feature on this kit makes it an ideal solution for mobile application or for installation into equipment that operates in situation with a lot of shock and vibration This Snap-In drive bay is great for custom fit into equipment that does not have a standard 3.5" drive bay or into a drive bay with a custom bezel.

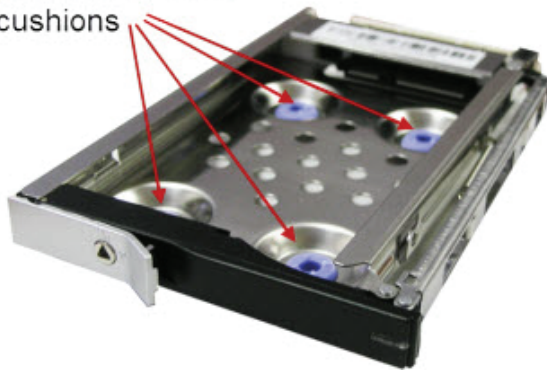
#### 2.5" Snap-In bay with shock mount



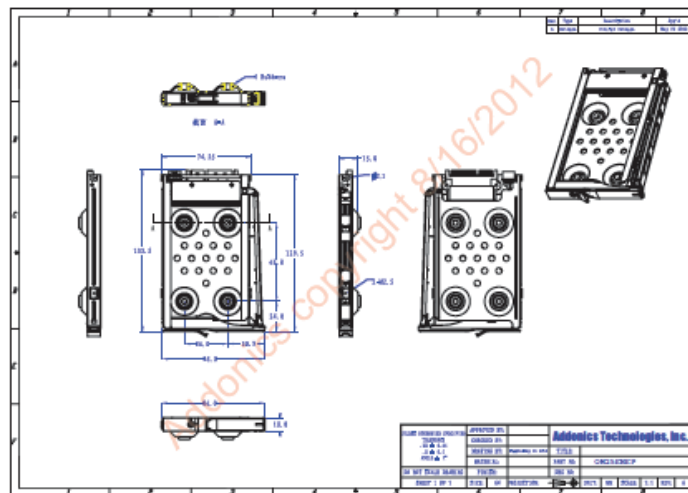
Front View

Back View

four shock mount cushions



Click on image below to download the PDF version of the detail mechanical drawing



### FEATURES

- Custom fit into non standard 3.5" drive bay
- Mount behind 3.5" drive bay with custom front bezel
- Shock mount mechanism to protect drives against shock and vibration
- Easy insertion and removal of hard drive from equipment without any tool or mounting screws.
- Accomodate 2.5" SATA hard drives or SSD drives with thickness up to 9.5 mm height
- Support SATA I, II and III
- Sturdy steel construction
- Supports hot swap (when connects to controller with this feature)
- Plug and play
- OS independent

For application that requires shock and vibration protection on the hard drive, check out the OEM shock mount version

### Package Content



### SPECIFICATIONS

<b>Support drive type</b>	2.5" SATA I, II and III hard drive or SSD with drive thickness up to 9.5 mm
<b>Interface Type:</b>	SATA males connectors
<b>Maximum transfer rate</b>	6 Gbps
<b>Construction material:</b>	stainless sheet metal
<b>Mounting</b>	Via four shock mount cushions
<b>Power connector:</b>	15-pin SATA power connector
<b>Dimensions:</b>	Click for <a href="#">detail mechanical drawing</a>
<b>Weight:</b>	79 g
<b>Storage Temperature:</b>	Range: -30C to +60C
<b>Operating Temperature:</b>	Range: 0C to +60C
<b>Storage Humidity:</b>	5% to 90%
<b>Operating Humidity:</b>	5% to 95%
<b>Warranty:</b>	One Year

### SPECIFICATIONS (Cont.)

#### System Requirements

- PC/AT or Compatible System
- 2 available SATA ports
- one 3.5" drive bay or 5.25" drive bay\*
- Pentium II or Greater
- Minimum 64 MB RAM
- One of the Following Operating Systems: DOS, Windows 98SE, Me, NT, 2000, XP, Vista, Windows 7, Linux (Kernel 2.4 and above), Solaris 10 and above, Mac OS X and above

\*optional 3.5" to 5.25" bay mounting bracket is required for mounting the Snap-In Double Drive inside the 5.25" drive bay