

### INTRODUCTION

This new Addonics 2.5" Disk Array is one of the highest density removable hard drive systems that supports installing up to six (6) 2.5" SATA/SAS hard drives or SSDs into one standard 5.25" drive bay. This compact form factor makes this Disk Array an ideal solution for mounting large numbers of 2.5" HDD or SSD into small computers, mini ATX systems or for applications that require a lot of storage in a very small foot print. Using Addonics 2.5" flash drive kits, various form factor SSDs such as CFast, mSATA, M2 or CF can be easily loaded into this Disk Array, creating a large capacity, low power and shock resistant solid state storage system.



The removable drive tray is designed to allow loading drives into this Disk Array without any mounting screw for convenience. For mobile application or installation in environment with frequent shock and vibration, drive can be secured to each drive tray with mounting screws to prevent any drive movement. Each drive slot is equipped with its own power and drive access LEDs as well as a latch on the drive tray to secure each hard drive in the Disk Array unit.

#### Front view

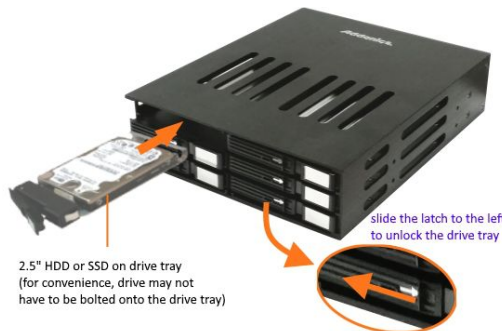
Designed to mount into standard 5.25" drive bay



#### Rear view



#### Drive installation illustration



#### Drive on drive tray shown upside down



note: hard drive shown in the picture is for illustration purpose and is not part of this Disk Array product

### FEATURES

- Install as many as six (6) 2.5" SATA hard drives or SSDs into a standard 5 1/4" drive bay
- Support SATA I / II / III or SSD with drive height up to 9.5 mm.
- Drive is added and removed via a removable drive tray (drive does not have to be bolted down to the drive tray for convenience)
- Light weight, sturdy brushed aluminum construction
- Two 40 x 40 mm. high CFM, low noise cooling fans
- Point to point connection
- High throughput up to 600 MB/sec with SATA 3.0 drive
- Hot swap support when connects to SATA port that supports this feature
- Six (6) separate 7-pin SATA data connector and one 4-pin Molex power connector
- Power and drive activity LED for each drive slot
- OS independent

(1) SATA hot swap feature works only with controllers that supports this feature. You may consider adding one of the Addonics SATA host controllers to your systems to assure the hot swap capability. New controllers from Intel and other suppliers may finally support this feature. Please verify with your controller manufacturer if you need to have hot swap in your application. Without hot swap support, drive can be removed without crashing the system. But replacing with a different drive can result in crashing the OS.

### SPECIFICATIONS

- Interface : SATA
- Construction material : brushed aluminum
- Hard Drive type : 2.5" SATA I, SATA II or SATA III HDD/SSD
- Maximum Number of Drives : six (6)
- Maximum drive height: 9.5 mm
- Cooling fans : Two 40 x 40 mm low noise cooling fans
- Maximum Data Transfer Rate : 6 Gbps
- Power Connection : one 4-pin Molex power connector (be sure there is adequate amperage on the 5V power to support all six drives)
- Connections : six (6) 7-pin SATA connectors
- LED's : Power and drive Activity LEDs on each drive tray
- Lock : latch on each drive tray
- Hard Drive Connection : Point to point, no cable required for installing hard drive
- Weight (with no hard drive) : ~1.7 lb (771g)
- Dimensions (L x W x H) : ~ 6.99 x 5.77 x 1.67 in. (177.5 x 146.5 x 42.5 mm)
- Operating Temperature and Humidity: 5°C - 60 °C, 10% - 90% RH
- Storage Temperature and Humidity: -20°C - 70 °C, 5% - 95% RH non condensing
- Warranty: One Year