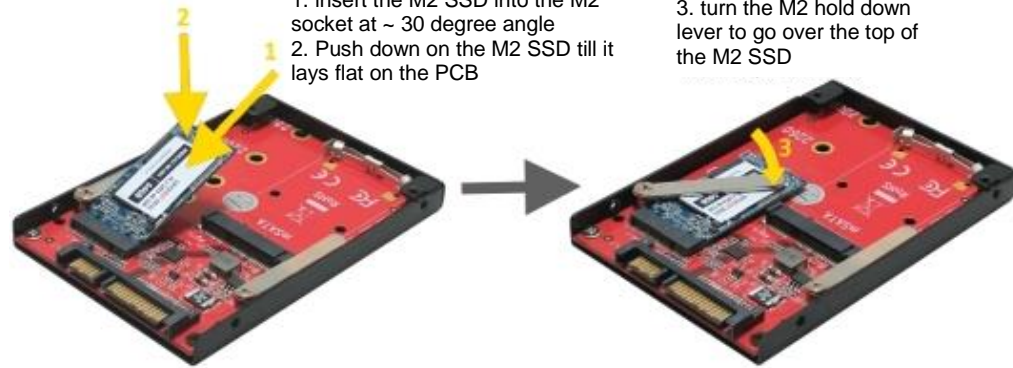


Installation of M2 SATA SSD

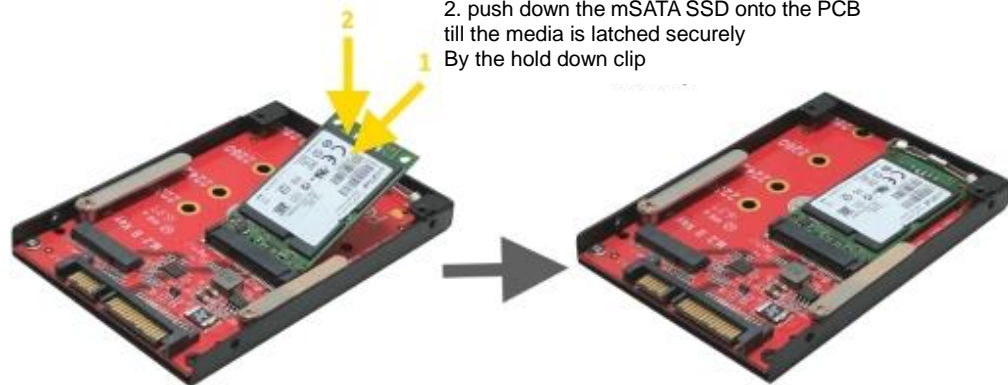
1. insert the M2 SSD into the M2 socket at ~ 30 degree angle
2. Push down on the M2 SSD till it lays flat on the PCB

3. turn the M2 hold down lever to go over the top of the M2 SSD



Installation of mSATA SSD

1. insert the mSATA SSD into the mSATA connector at ~ 30 degree angle
2. push down the mSATA SSD onto the PCB till the media is latched securely by the hold down clip



Note: Only M2 SSD is detected when both M2 and mSATA SSD are installed. To install ½ size mSATA SSD, secure the media by turning the mSATA hold down lever to go on top of the mSATA

Addonics
TECHNOLOGIES

User Guide



2.5" M2/mSATA SSD Drive (AD25M2MSA)

[WWW.addonics.com](http://www.addonics.com)

CONTACT US

www.addonics.com

Phone: 408-573-8580

Fax: 408-573-8588

Email: <http://www.addonics.com/sales/query/>

Technical Support

If you need any assistance to get your unit functioning properly, please have your product information ready and contact Addonics Technical Support at:

Hours: 8:30 am - 6:00 pm PST

Phone: 408-453-6212

Email: <http://www.addonics.com/support/query/>