

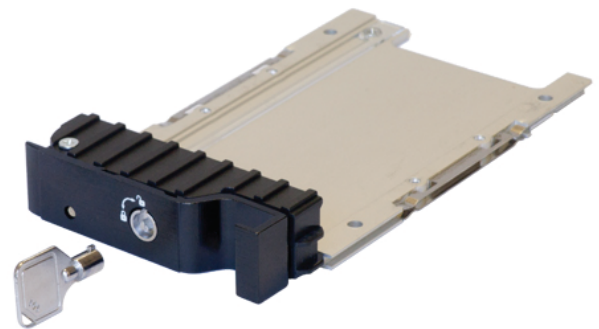
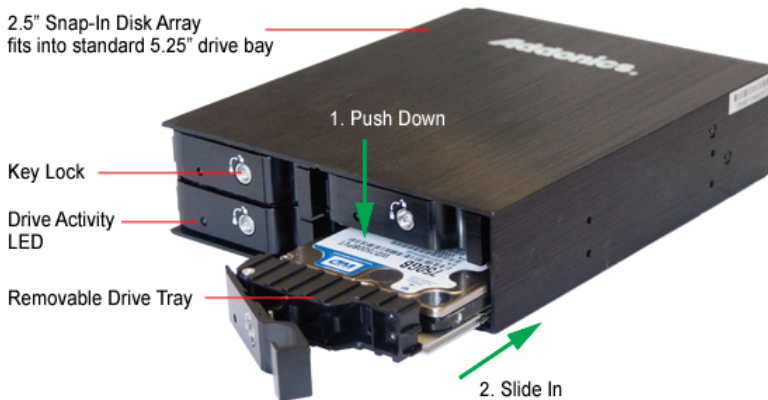
INTRODUCTION

The new Addonics 2.5" Snap-In Disk Array is a high density removable hard drive system that supports installing up to four 2.5" SATA/SAS hard drives up to 15 mm height or 2.5" SSDs into one standard 5.25" drive bay. This compact form factor makes this Disk Array an ideal solution for increasing hard drive storage in small computers, mini ATX systems or for applications that require large number of drives. Once the drive is mounted onto the removable drive tray, the drive can then be easily slid into or removed from the Disk Array unit, similar to using a VHS cassette. Each drive slot is equipped with its own power and drive access LEDs as well as a lock on the drive tray to secure each hard drive in the Disk Array unit.



Illustration on how to install drive into the Disk Array unit (shown with 2.5" HDD mounted on drive tray)

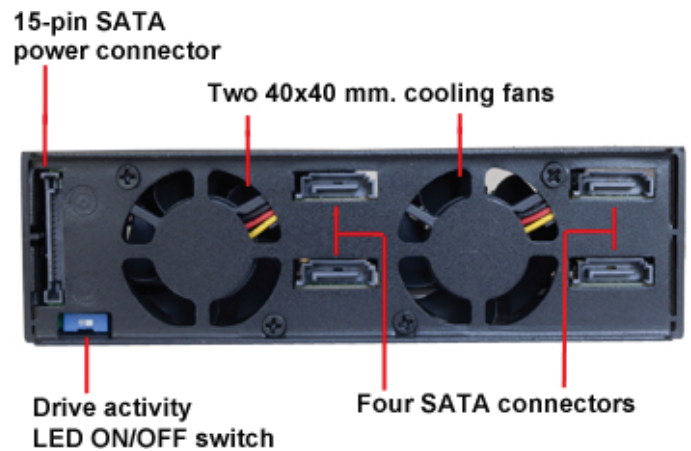
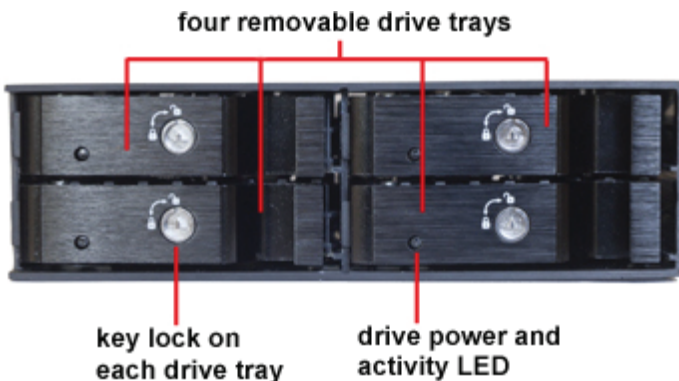
Detail view of the removable drive tray



note: hard drive above is for illustration only and is not part of the product

Front View

Rear View



FEATURES

- Install as many as four 2.5" SATA hard drives or SSDs into a standard 5 1/4" drive bay
- Support SATA I / II / III or SSD with drive height up to 15 mm.
- Drive is added and removed via a removable drive tray
- Light weight brushed aluminum construction
- Two 40 x 40 mm. high CFM, low noise cooling fans
- Point to point connection
- High throughput up to 600 MB/sec with SATA 3.0 drive
- Sturdy steel metal construction
- Hot swap support when connects to SATA port that supports this feature
- Four separate 7-pin SATA data connector and one 15-pin SATA power connector
- Power and drive activity LED for each drive slot
- OS independent

(1) Serial ATA hot swap feature works only with controllers basing on Silicon Image chip set from our in house testing. Other controllers that are not Silicon Image based may not support hot swap. You may consider adding one of the Addonics Serial ATA host controllers to your systems to ensure the hot swap capability. New controllers from Intel and other suppliers may finally support this feature. Please verify with your controller manufacturer if you need to have hot swap in your application. Hot swap is supported in Windows 2000 and XP only. On other OS, drive can be removed without crashing system. But replacing with a different drive can result in crashing the OS.

SPECIFICATIONS

Interface	SATA / /SAS
Construction material	brushed aluminum
Hard Drive type	2.5" SATA I, SATA II or SATA III HDD/SSD
Maximum Number of Drives	4
Maximum drive height	15 mm
Cooling fans	Two 40 x 40 mm low noise cooling fans
Maximum Data Transfer Rate	6Gbps
Power Connection	One 15-pin SATA power connector (be sure there is adequate amperage on the 5V power to support all four drives, SAS drive typically requires more power)
Connections	four 7-pin SATA connectors
LED's	Power and drive Activity LEDs on each drive tray
Lock	key lock for each drive tray
Hard Drive Connection	Point to point, no cable required for installing hard drive
Weight (with no hard drive)	~1.6 lb (726g)
Dimensions (L x W x H)	~ 6.99 x 5.77 x 1.67 in.(177.5 x146.5 x 42.5 mm)
Operating Temperature and Humidity:	5°C - 60 °C, 10% - 90% RH
Storage Temperature and Humidity:	-20°C - 70 °C, 5% - 95% RH non condensing
Warranty	One Year