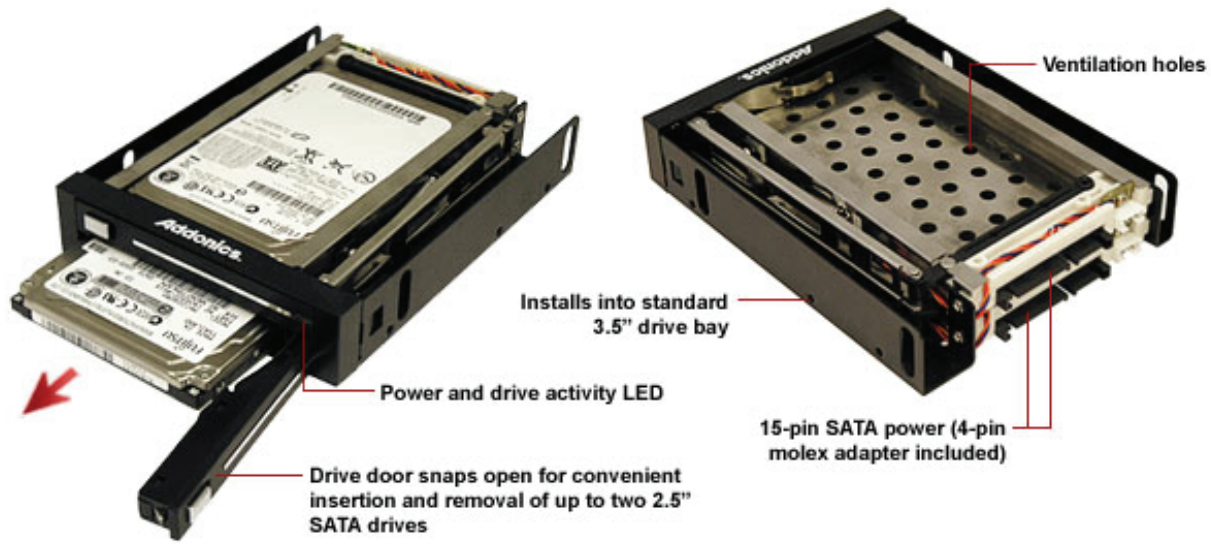
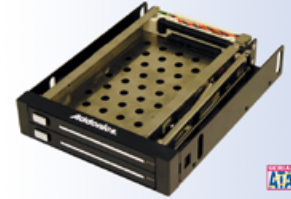


INTRODUCTION

Built on the same reliable and convenient removable mechanism of the Snap-In Mobile Rack, the Addonics Snap-In Double Drive now enables 2.5" SATA hard drives to be use like a tape cartridge in any Desktop, rack mount or industrial PC. Designed to fit inside a standard 3.5" drive bay, the Snap-In Double Drive comes with 2 drive slots to accommodates up to two hard drives. By connecting to a hot swappable SATA controller, the hard drive can be easily added or removed from the system just like an ordinary cassette tape.

Snap-In Double Drive



FEATURES

- Installs into standard 3.5" drive bay
- Easy ion and removal of hard drive without any tool or mounting screws.
- Two drive slots to accomodate up to two 2.5" SATA 1.5Gbps or SATA 3Gbps hard drives or SSD drives of 9mm - 9.5mm height
- Sturdy steel construction
- Great for RAID application (requires an optional SATA RAID controller)
- LEDs for power and drive activity
- Supports hot swap (when connects to controller with this feature)
- Plug and play
- DOS, Windows 98SE, Me, NT, 2000, XP, Vista, Windows 7, Linux (Kernel 2.4 and above), Solaris 10 and above, Mac OS X and above

SPECIFICATIONS

Support drive type	2.5" SATA 3Gbps or 1.5Gbps hard drive
Interface Type:	SATA 1.5Gbps, SATA 3Gbps
Construction material:	metal frame
LED	Power(Blue) and Drive Activity(Orange) LED
Supported OS	DOS, Windows 98SE, Me, NT, 2000, XP, Vista, Windows 7, Linux (Kernel 2.4 and above), Solaris 10 and above, Mac OS X and above
Power Supply:	15-pin SATA or 4-pin Molex power connector source
Dimensions:	134mm (L) 102mm (W) x 24mm (H)
Weight:	282.5g
Operating Temperature:	Range: 0C to +65C
Operating Humidity:	5% to 95% (non-condensing)
Storage Temperature:	Range: -30C to +60C
Storage Humidity:	5% to 90%
Warranty:	One Year

System Requirements

- PC/AT or Compatible System
- 2 available SATA ports
- one 3.5" drive bay or 5.25" drive bay*
- Pentium II or Greater
- Minimum 64 MB RAM
- One of the Following Operating Systems: DOS, Windows 98SE, Me, NT, 2000, XP, Vista, Windows 7, Linux (Kernel 2.4 and above), Solaris 10 and above, Mac OS X and above

*optional 3.5" to 5.25" bay mounting bracket is required for mounting the Snap-In Double Drive inside the 5.25" drive bay