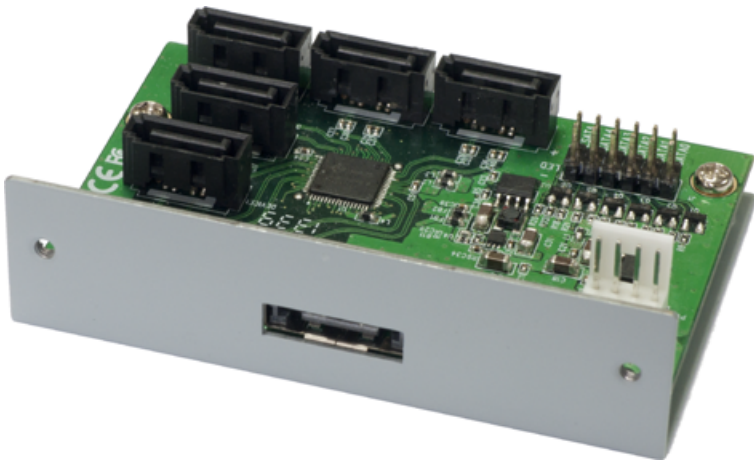


# User Guide



## 5-Port 6G Rack Mount PM (AD5SARM6G)

[www.addonics.com](http://www.addonics.com)

### Technical Support

If you need any assistance to get your unit functioning properly, please have your product information ready and contact Addonics Technical Support at:

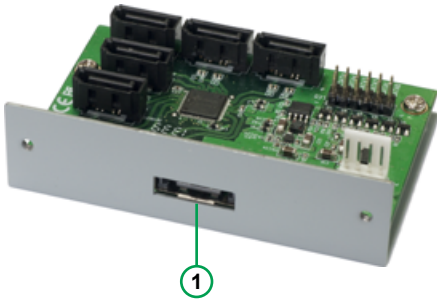
**Hours: 8:30 am - 6:00 pm PST**

**Phone: 408-453-6212**

**Email: <http://www.addonics.com/support/query/>**

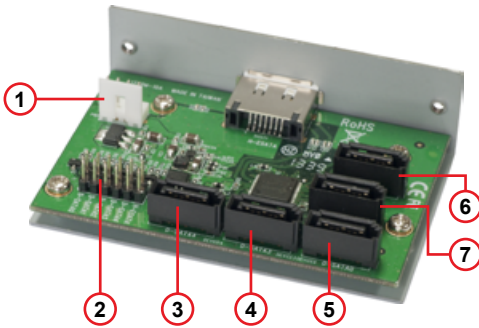
# Overview

## Front View

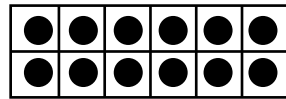


1. Host Port

## Back View



1. Small 4P Power Connector
2. LED PIN



Device LEDs Host LED

LEDs will glow to indicate a connection and blink to indicate activity. The Host LED will indicate activity for any and all drives, the drive LEDs indicate activity for each drive only.

3. P4
4. P3
5. P0
6. P1
7. P2

P0 - P4 are device ports

## Installation

1. Mount the port multiplier into a chassis that has a SCSI mounting punch.
2. Connect a 4-pin floppy power cable to the port multiplier.
3. Connect the Host eSATA connector to a Port Multiplier aware eSATA controller.
4. Connect up to five individual hard drives.

### Port Multiplier Compatibility

The Port Multiplier will only work with a Port Multiplier aware SATA host adapter. Identify your host controller and check with its hardware manufacturer if you are unsure. Addonics offers several Port Multiplier aware host adapters.

# CONTACT US

---

**www.addonics.com**

**Phone: 408-573-8580**

**Fax: 408-573-8588**

**Email: <http://www.addonics.com/sales/query/>**