

Default settings on the duplicator:

Copy – set to WHOLE MEDIA. This setting copies everything in the source drive to the target drive sector by sector. This setting ensures a good copy of any drives: boot drive, blank drive, encrypted drive or drive with any file system.

To speed up the copying, you may change the setting to SYSTEM and FILES. This setting skips copying sectors with no recognizable data. This is only for drives that have the following file system: NTFS, FAT/16/32, exFAT, HFS, EXT3/4 or XFS. This setting is not recommended for copying boot drive as certain boot sectors may not be copied correctly.

Performance – set to SPEED for best performance. May encounter compatibility issue with certain SSD or old HDD. Should that occur, try to change the setting to BALANCE or COMPATIBILITY.

Please review the High-Speed Duplicator Controller User Manual for all the detail settings.

Making duplicates

Power up the unit by pressing on the ON/OFF button at the front lower right-hand corner. Once the unit is ready, the LCD should display

HDD Duplicator

1. Copy

The unit is now ready. Load a source drive to the source slot (the top bay for 3.5" HDD or the second bay from the top for 2.5" HDD/SSD). Be sure the source switch at the back is set correctly. Load the target drives to the target slots (the lower four bays). After a few seconds, the LCD should display the number of target drives detected. Press the OK button on the LCM control panel to start the copying.

Note: some drives may not be detected correctly. In that case, please leave the drive inside the unit and re-start the duplicator.

CONTACT US

www.addonics.com

Phone: 408-573-8580

Fax: 408-573-8588

Email: <http://www.addonics.com/sales/query/>

Addonics
TECHNOLOGIES

User Guide



1:4 M2/mSATA /SSD/HDD Duplicator PRO

Model: M2S25HD4H-2S

Technical Support

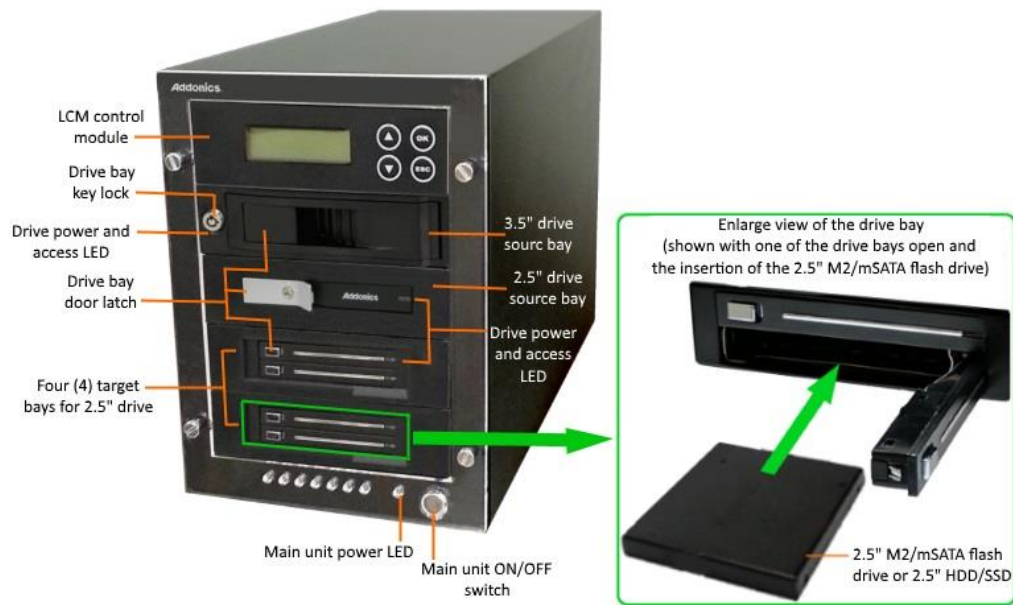
If you need any assistance to get your unit functioning properly, please have your product information ready and contact Addonics Technical Support at:

Hours: 8:30 am - 6:00 pm PST

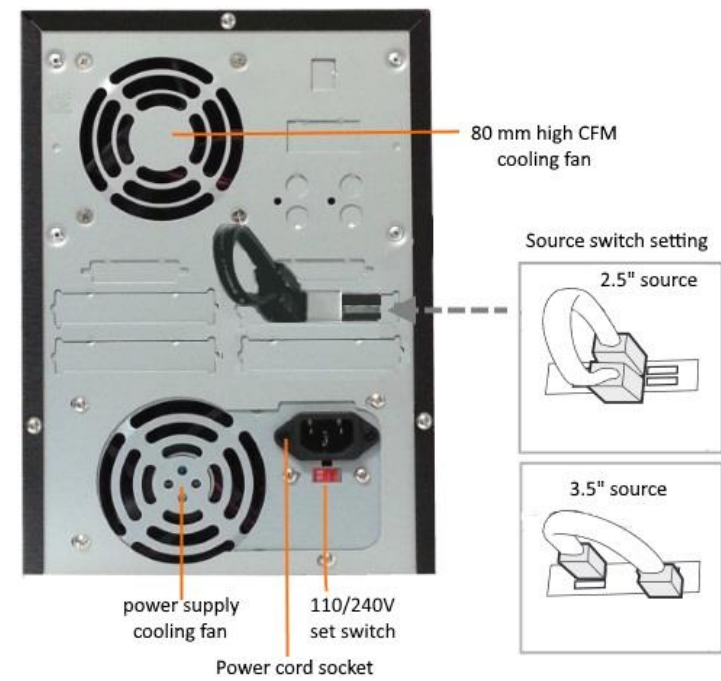
Phone: 408-453-6212

Email: <http://www.addonics.com/support/query/>

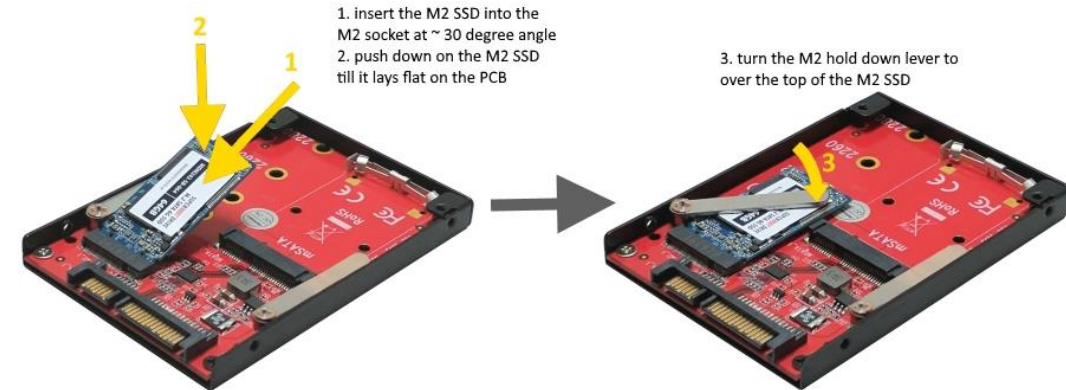
Overview



Rear view

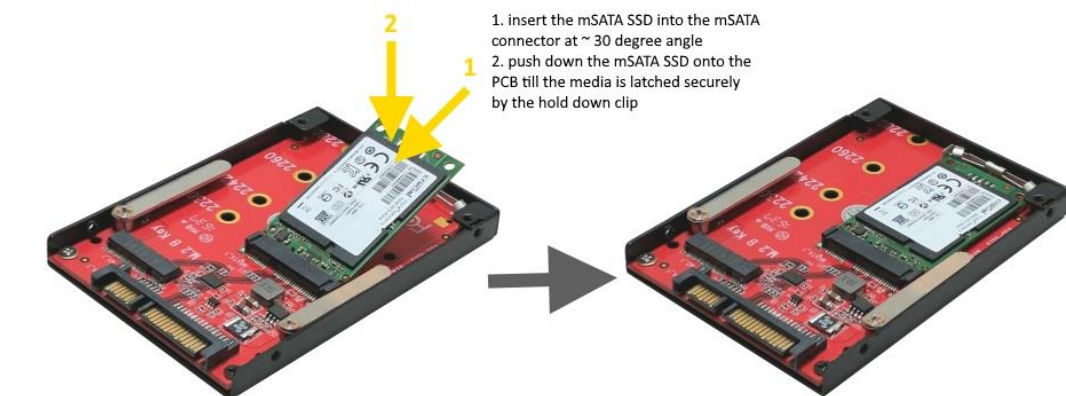


M2 SSD installation



WARNING
Be sure to set the 110/240V switch to the correct setting to your local outlet before powering on the unit. Wrong setting may cause damage to the power supply

mSATA installation



Package content:

- 1:4 M2/mSATA /SSD/HDD Duplicator PRO main unit
- Five (5) units of 2.5" M2/mSATA flash drive adapter (model: AD25M2MSA)
- One power cord
- One 6-in eSATA cable (use for source selection)
- This quick start user guide
- High-Speed Duplicator Controller User Manual