

**Addonics**  
TECHNOLOGIES

# User Guide



## Sapphire for IDE and SATA, eSATA & USB 3 (SESSIU3CS)

[www.addonics.com](http://www.addonics.com)

---

### Technical Support

If you need any assistance to get your unit functioning properly, please have your product information ready and contact Addonics Technical Support at:

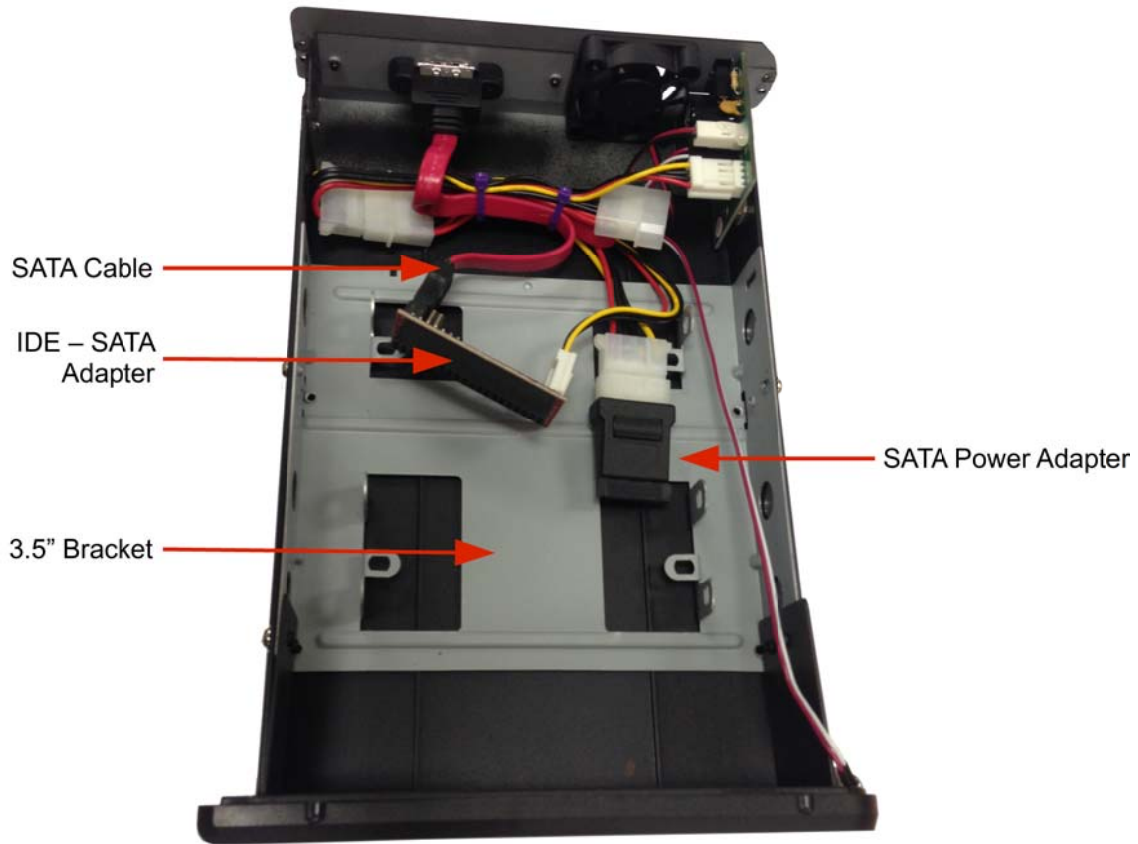
**Hours: 8:30 am - 6:00 pm PST**

**Phone: 408-453-6212**

**Email: <http://www.addonics.com/support/query/>**

# Overview

## Interior View



Power Supply



Removable Drive Faceplate



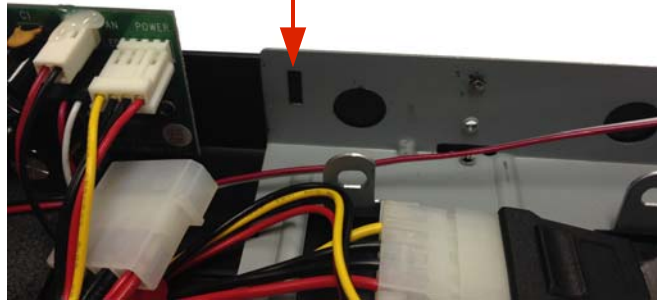
eSATA Cable



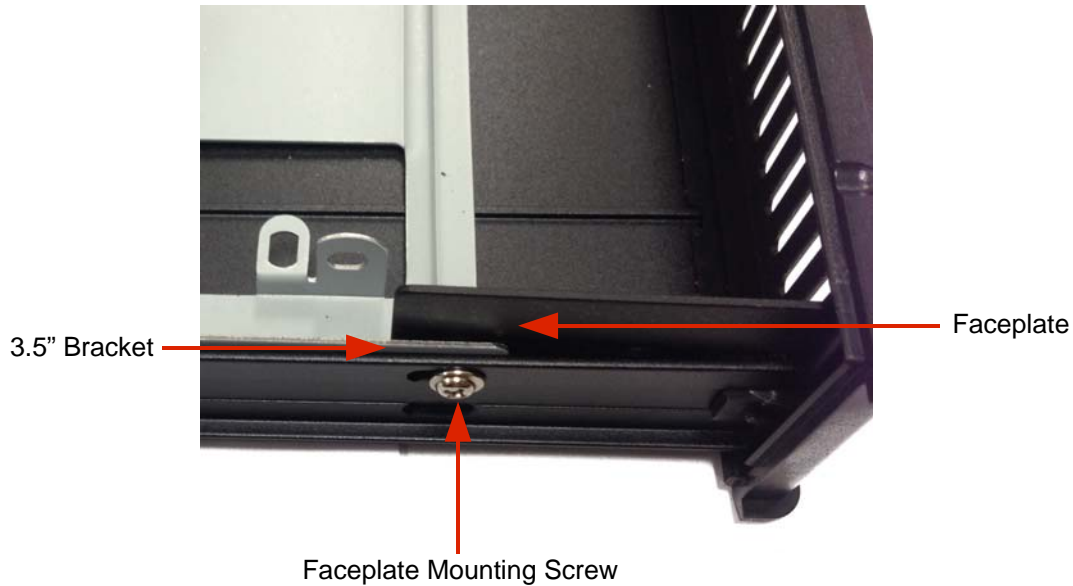
USB 3.0 to eSATA mini Adapter

# Drive Installation

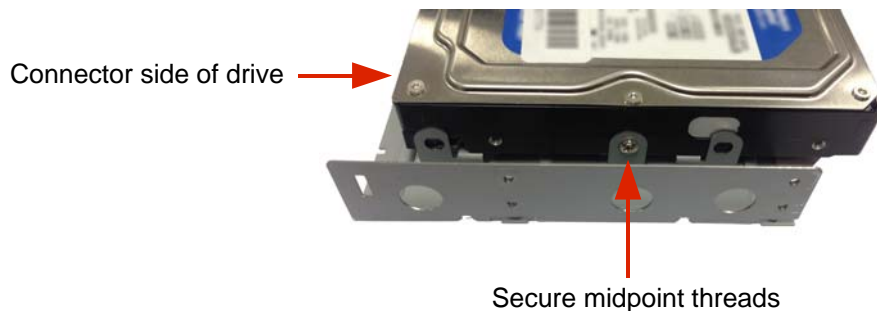
Faceplate Notch  
(Hard Disk Installation)



Hard Disk Installation requires the 3.5" Bracket is installed reversed, with the Faceplate Notch towards the rear of the cabinet. The Faceplate is secured in place using the same screw as the 3.5" bracket near the front of the cabinet.



**Hard Disk Installation:** Remove the four screws holding in the 3.5" Bracket and faceplate. Next, mount the hard disk on the 3.5" bracket in reverse, Connector side on the same side as the Faceplate notch on the 3.5" Bracket. Align and secure the threads at midpoint on the drive and bracket. Insert the finished bracket and drive assembly in the Sapphire cabinet, with the bracket's faceplate notch to the rear. Insert the Sapphire Faceplate by gently squeezing the ears together to fit inside the 3.5" bracket. Align the 3.5" bracket, Faceplate, and inner casing holes and secure all three together with the screws.



### Final Assembly of Hard Disk Installation (IDE Drive Shown)



**Removable Drive Installation:** Remove the 3.5" Bracket and install the Removable Drive Faceplate. Install the removable drive so the drive's exterior access is aligned with the Removable Drive Faceplate, then insert the completed assembly into the Sapphire Cabinet, secure with screws and connect as described for IDE or SATA drives.

**Optical Drive Installation:** Remove the 3.5" Bracket and Sapphire Faceplate, insert the optical drive directly into the Sapphire Cabinet, secure with screws and connect as described for IDE or SATA drives.

**IDE Installation:** Connect the power and SATA cables to the IDE - SATA Adapter first, then insert the adapter into the IDE connector on the back of the drive. Remove the SATA Power Adapter from the power cable, connect power to the drive and close the outer cover.

**SATA Installation:** Remove the IDE - SATA adapter, then connect the SATA Power Adapter on the end of the power cable and the SATA cable to the back of the drive and close the outer cover.

**USB 3.0:** Install the USB 3.0 - eSATA mini Adapter onto the end of the eSATA cable, then connect to a PC's USB 2.0 or USB 3.0 host port. The Adapter supports hot swapping and "Safe Removal." For best results, remove the adapter from the computer, not the eSATA cable from the adapter.

#### Hot Swapping

This unit supports hot swapping (inserting or removing drives while the drives are running and connected to a computer). The eSATA controller on the computer must also support hot swapping - be sure to confirm this before attempting to insert or remove drives while the system is running. Also be sure to practice the appropriate safe removal procedure before proceeding. Failure to practice safe removal procedures will result in loss or corruption of data.

## Contact Us

**www.addonics.com**

**Phone: 408-573-8580**

**Fax: 408-573-8588**

**Email: <http://www.addonics.com/sales/query/>**