



SNAP-IN DOUBLE DRIVE

Hot swappable 2.5" SATA Mobile Rack



Specifications

- Product name : Snap-In Double Drive
- OS: Windows Vista/XP/2003/2000/98SE/ME,
- Mac 9.3 and above, Linux kernel 2.4 and above
- Interface: Supports SATA(3.0Gbps, 1.5Gbps)
- Fits all standard 2.5" SATA hard drives
- Hot swappable
- Weight: 282.5g
- Dimensions: 134mm(L) x 102mm(W) x 24mm(H)
- Operation Temperature: 0° ~ 55°C

Package Content

Accessories	Quantity
Snap-In™ Double Drive	1
SATA 7P Data Cable	2
SATA15P to 4P+4P Power Cable	2
3.5" Drive Bay Mounting Screws	4
Manual	1

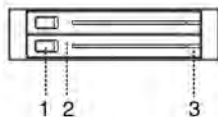
Opening drive door

Slide the switch to the right to open the drive door.



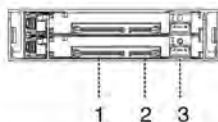
Front panel

1. Slide switch
2. Drive door
3. HDD LED indicator



Rear panel

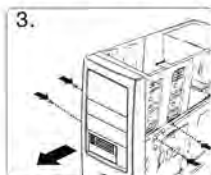
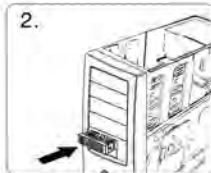
1. SATA power connector
2. SATA data connector
3. LED access port



Installation

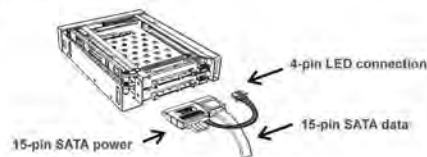


1. Remove the slot cover of an empty 3.5" drive bay.
2. Carefully insert the Snap-In Double Drive into the bay and push it inward until the Snap-In Double Drive's screw hole is aligned with the hole of the bay.
3. Secure the Snap-In Double onto the 3.5" drive bay using the included screws, with two screws on each side to firmly mount the device in place.



Connection

1. Insert the SATA connector into the Snap-In Double Drive's 15-pin power connector, connect the 4-pin molex connector to the computer power supply, and the small 4-pin LED wire connector to the 4-pin LED port at the back of the Snap-In Double Drive.
2. Insert one end of the SATA data cable to the Snap-In Double Drive, and the other end to the motherboard or host controller.



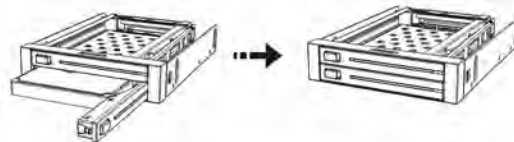
1. Be sure to connect the 4-pin LED wire, or the LED indicator will not light up.
2. Before connecting the Snap-In Double Drive to the computer, please make sure there is no object near the terminals which may affect the mechanical assembly or become a possible source of an electrical short.

Install HDD into Double Drive

1. Pull the two slide switches of the Double Drive gently from left to right to open the drive door.



2. Push the 2.5" hard drive into the Snap-In Double Drive and close the drive door.



1. After inserting HDD and closing the front door, carefully push the tray until it is seated into position. Excessive force may damage its mechanical parts.
2. If the HDD is inserted backward into the tray, forcing the device may damage the Snap-In™ Double Drive.

Unload the Hard Disk

1. Press the slide switches of the Double Drive gently to eject the drive door.
2. Open the drive door to remove the 2.5" hard drive, then close the drive door firmly until the locking mechanism clicks shut.

1. Do not eject the HDD while it is busy.
2. Carefully take the HDD out from Snap-In™ Double Drive. The HDD can reach temperatures over 50°C. It will not burn the fingers but should be handled with care.

ADDONICS TECHNOLOGIES

Email: <http://www.addonics.com/sales/query/>
Web: <http://www.addonics.com/>

Technical Support

Email: <http://www.addonics.com/support/query/>
All brand names are registered trademarks of their respective companies. Products and specifications subject to change without notice. Copyright 2008 © Addonics Technologies, Inc. All rights reserved.